



MASTER LEDtube EM/ Mains T8



MASTER LEDtube 900mm HO 12W 865 T8

The Philips MASTER LEDtube integrates a LED light source into a traditional fluorescent form factor. Its unique design creates a perfectly uniform visual appearance, which cannot be distinguished from traditional fluorescent. These T8 LED tubes are the right choice for absolute performance and are designed to stand up to everyday conditions. Unparalleled savings thanks to low energy consumption and an exceptionally long lifetime ensure this tube masters every demanding application.

Warnings and Safety

- NOTE: The overall energy efficiency and light distribution of any installation that uses these lamps will be determined by the design of the installation.

Product data

General information	
Cap-Base	G13 ROT (Rotating) [Medium Bi-Pin Fluorescent]
CE mark	Yes
EU RoHS compliant	Yes
Nominal Lifetime (Nom)	75000 h
Switching Cycle	200000
Flux measurement reference	Sphere
Tier	MASTER
Light technical	
Color Code	865 [CCT of 6500K]
Beam Angle (Nom)	160 °
Luminous Flux (Nom)	1575 lm

Color Designation	Cool Daylight
Correlated Color Temperature (Nom)	6500 K
Luminous Efficacy (rated) (Nom)	131 lm/W
Color Consistency	<6
Color Rendering Index (Nom)	80
LLMF At End Of Nominal Lifetime (Nom)	70 %
Operating and electrical	
Input Frequency	50 to 60 Hz
Power (Nom)	12 W
Lamp Current (Max)	60 mA
Lamp Current (Min)	50 mA
Starting Time (Nom)	0.5 s
Warm Up Time to 60% Light (Nom)	0.5 s

MASTER LEDtube EM/Mains T8

Power Factor (Nom)	0.9
Voltage (Nom)	220-240 V
Temperature	
T-Ambient (Max)	45 °C
T-Ambient (Min)	-20 °C
T-Storage (Max)	65 °C
T-Storage (Min)	-40 °C
T-Case Maximum (Nom)	50 °C
Controls and dimming	
Dimmable	No
Mechanical and housing	
Bulb Finish	Frosted
Bulb Material	Plastic
Product Length	900 mm
Bulb Shape	Tube, double-ended

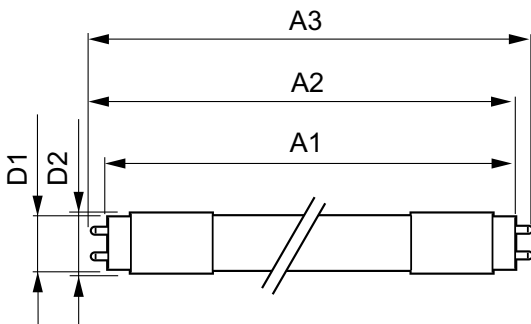
Approval and application

Energy Efficiency Class	E
Energy Saving Product	Yes
Approval Marks	RoHS compliance TUV CE marking KEMA Keur certificate
Energy Consumption kWh/1000 h	12 kWh
EPREL Registration Number	1206964

Product data

Full product code	871869668710900
Order product name	MASTER LEDtube 900mm HO 12W 865 T8
EAN/UPC - Product	8718696687109
Order code	929001298502
Numerator - Quantity Per Pack	1
Numerator - Packs per outer box	10
Material Nr. (12NC)	929001298502
Net Weight (Piece)	0.180 kg

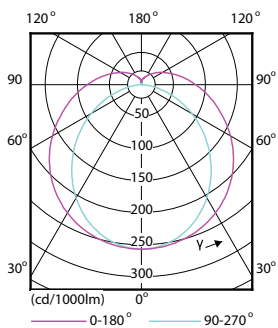
Dimensional drawing



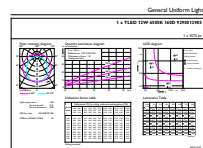
MASTER LEDtube 900mm HO 12W 865 T8

Product	D1	D2	A1	A2	A3
MASTER LEDtube 900mm HO 12W 865 T8	25.78 mm	28 mm	893.3 mm	900.4 mm	907.5 mm

Photometric data



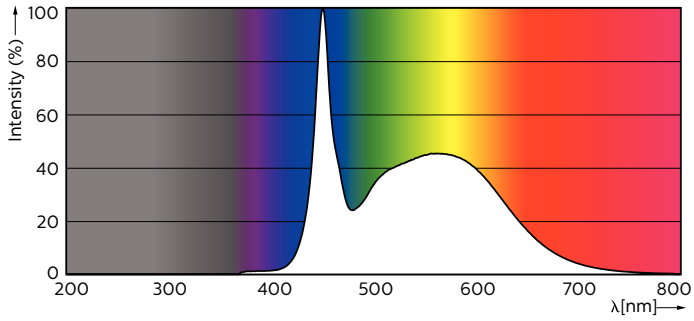
Light Distribution Diagram



General uniform lighting

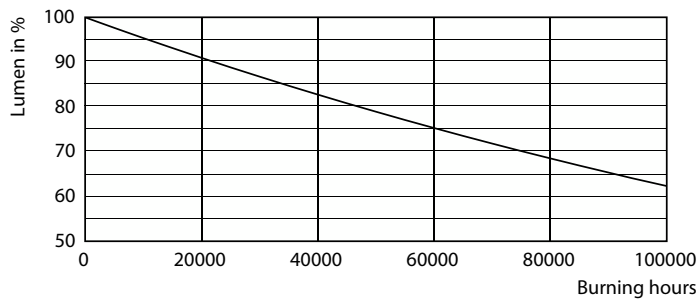
MASTER LEDtube EM/Mains T8

Photometric data

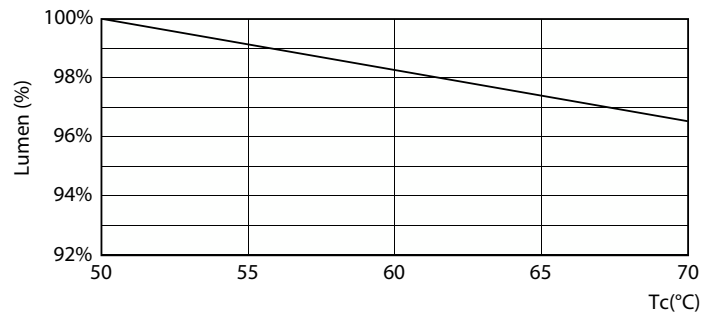


Spectral Power Distribution Colour

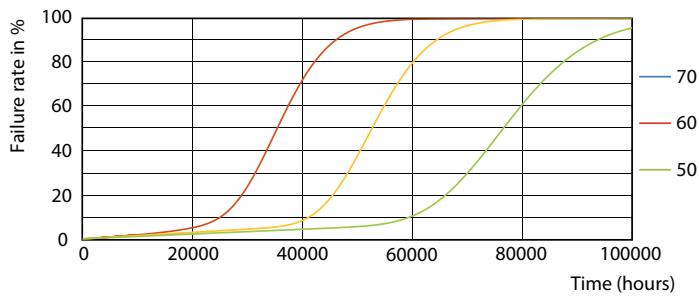
Lifetime



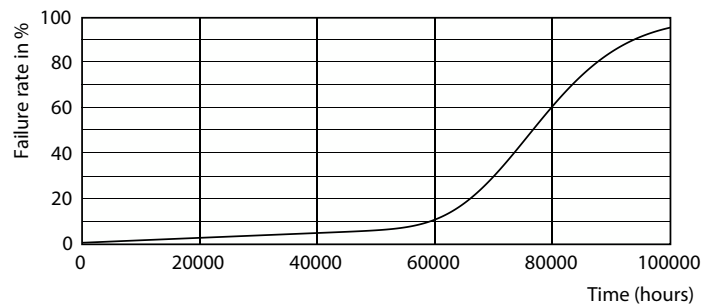
Lumen Maintenance Diagram



LumenVsTc



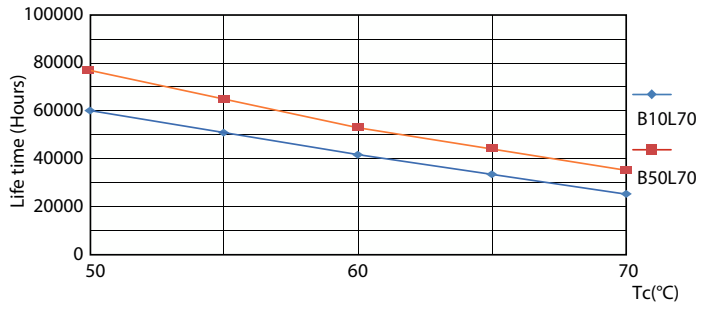
FailureRate



Life Expectancy Diagram

MASTER LEDtube EM/Mains T8

Lifetime



LifetimeVsTc

