



TrueForce LED Industrial and Retail (Highbay – MH)

TrueForce LED HPI UN 95W E40 840 WB

Philips LED Highbay lamps give you a quick and easy payback solution to replace HID alternatives in high-bay applications. TrueForce LED solutions give you the LED benefits of energy-efficiency and a long lifetime for a low initial investment. The design enables the direct retrofit of HID lamps with TrueForce LED lamps without changing the fixtures or gear. In fact, the lamp is compatible with both 250W and 400W gears to maximize the feasibility of such retrofits. Ignitor smart logic eliminates ignitor failure and continued ignition, which may generate overheating and EMI risks. Multiple beam angle options and a high color rendering index enhance the lighting distribution in medium and high-bay applications, while creating a comfortable, safe and highly-productive environment.

Warnings and Safety

- Installation should always be performed by a qualified electrician or installer. Use the installation guide for instructions.

Product data

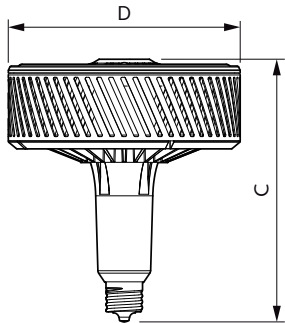
General information		Light technical	
Cap-Base	E40 [E40]	Color Code	840 [CCT of 4000K]
EU RoHS compliant	Yes	Beam Angle (Nom)	120 °
Nominal Lifetime (Nom)	50000 h	Luminous Flux (Nom)	13000 lm
Switching Cycle	50000X	Color Designation	Cool White (CW)
Technical Type	95-250W	Correlated Color Temperature (Nom)	4000 K
Flux measurement reference	Wide Cone	Luminous Efficacy (rated) (Nom)	136.00 lm/W
		Color Consistency	<6
		Color Rendering Index (Nom)	80

TrueForce LED Industrial and Retail (Highbay – MH)

LLMF At End Of Nominal Lifetime (Nom)	70 %
Operating and electrical	
Input Frequency	50 Hz
Power (Nom)	95 W
Lamp Current (Nom)	500 mA
Wattage Equivalent	250 W
Starting Time (Nom)	0.5 s
Warm Up Time to 60% Light (Nom)	1 s
Power Factor (Nom)	0.9
Voltage (Nom)	220-240 V
Temperature	
T-Case Maximum (Nom)	91.5 °C
Controls and dimming	
Dimmable	No
Mechanical and housing	
Bulb Shape	Others

Approval and application	
Energy Efficiency Class	E
Energy Consumption kWh/1000 h	95 kWh
EPREL Registration Number	403625
Product data	
Full product code	871869975369600
Order product name	TrueForce LED HPI UN 95W E40 840 WB
EAN/UPC - Product	8718699753696
Order code	929002350802
Numerator - Quantity Per Pack	1
Numerator - Packs per outer box	3
Material Nr. (12NC)	929002350802
Net Weight (Piece)	1.250 kg

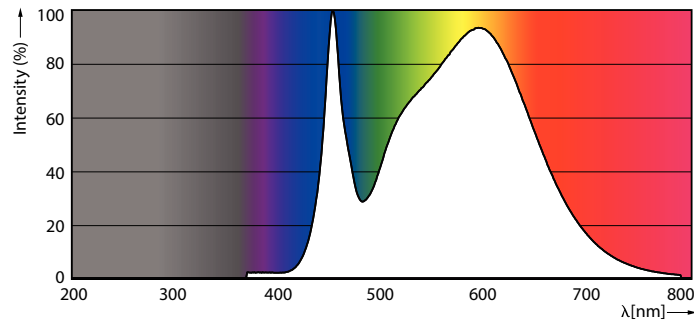
Dimensional drawing



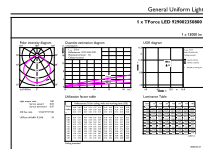
TrueForce LED HPI UN 95W E40 840 WB

Product	D	C
TrueForce LED HPI UN 95W E40 840 WB	250 mm	290 mm

Photometric data



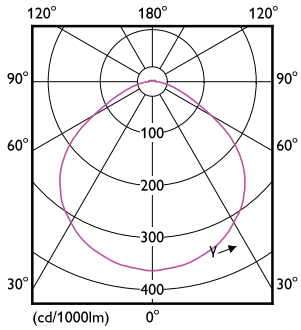
LEDForce HPI 95W Others E40 840 1



LEDForce HPI 95W Others E40 840 120D

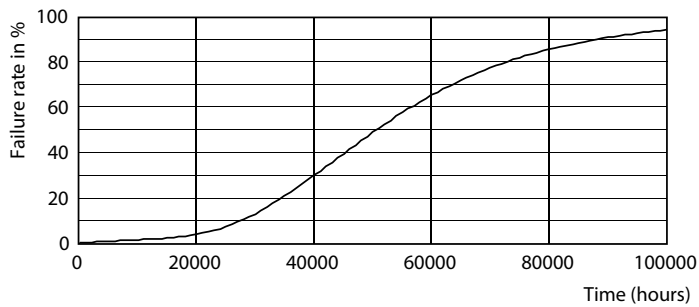
TrueForce LED Industrial and Retail (Highbay – MH)

Photometric data

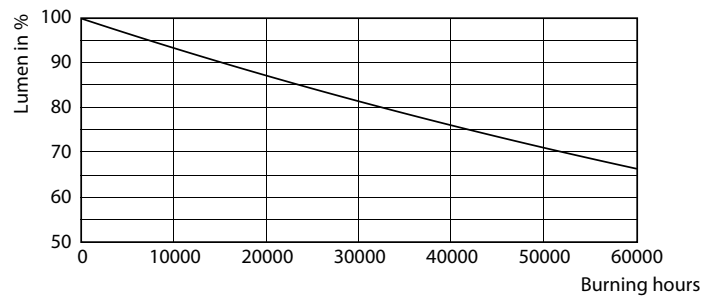


LEDTForce HPI 140W Others E40 120D

Lifetime



50K



50K

