



# MASTER LED tube InstantFit HF T5



## MAS LEDtube HF 900mm HO 18.5W 840 T5

MASTER, LEDtube, T5, HF, 900 mm, 18.5 W, 39W TL5 HO, 4000 K, 2800 lm, CRI 80, 60000 hour(s)

The Philips MASTER LEDtube integrates a LED light source into a traditional fluorescent form factor. Its unique design creates a perfectly uniform visual appearance, which cannot be distinguished from traditional fluorescent. These T5 lighting tubes are the right choice for absolute performance and are designed to stand up to everyday conditions. Unparalleled savings thanks to low energy consumption and an exceptionally long lifetime make these T5 LED tubes the choice for every demanding application.

### Product data

General Information		Luminous Efficacy (rated) (Nom)	
Cap-Base	G5		151 lm/W
Nominal lifetime	60,000 hour(s)	Color Consistency	<6
Switching Cycle	50,000	Color rendering index (CRI)	80
Lighting Technology	LEDtube	LLMF At End Of Nominal Lifetime (Nom)	70 %
Flux measurement reference	Sphere	Photobiological safety according to EN 62471	RG0
Warranty period	5 years		
Light Technical		Operating and Electrical	
Color Code	840 [CCT of 4000K]	Line Frequency	30K to 100K Hz
Beam Angle (Nom)	200 degree(s)	Input Frequency	30K to 100K Hz
Luminous Flux	2,800 lm	Power Consumption	18.5 W
Color Designation	Cool White (CW)	Lamp Current (Max)	350 mA
Correlated Color Temperature (Nom)	4000 K	Lamp Current (Min)	120 mA
		Starting Time (Nom)	0.5 s
		Warm-up time to 60% light	0.5 s

# MASTER LED tube InstantFit HF T5

Power Factor (Fraction)	0.9
Voltage (Nom)	60-100 V
LED alternative to fluorescent lamp power	39W TL5 HO
Inrush current at mains	-
Max. lamp no. on MCB B type 10A – Mains	-
Max. lamp no. on MCB B type 10A – EM ballast without Compensation Capacitor.	-
Max. lamp no. on MCB B type 10A – EM ballast with Compensation Capacitor.	-
Max. lamp no. on MCB B type 16A – Mains	-
Max. lamp no. on MCB B type 16A – EM ballast without Compensation Capacitor.	-
Max. lamp no. on MCB B type 16A – EM ballast with Compensation Capacitor.	-
Ballast Compatibility	HF

## Temperature

T-Case Maximum (Nom)	60 °C
----------------------	-------

## Controls and Dimming

Dimmable	Yes - Check ballast compatibility
----------	-----------------------------------

## Mechanical and Housing

Bulb Finish	Frosted
Bulb Material	Glass
Product Length	900 mm
Bulb Shape	T5

Net Weight (Piece)	0.115 kg
--------------------	----------

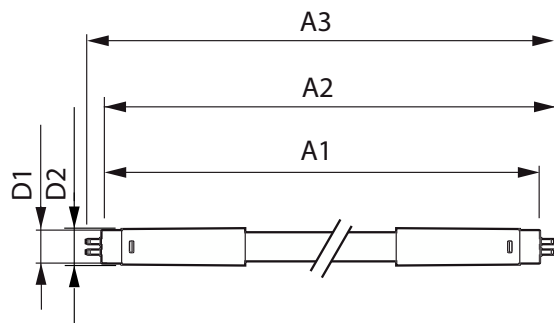
## Approval and Application

Energy Efficiency Class	D
Energy Saving Product	Yes
Approval Marks	RoHS compliance KEMA Keur certificate
Energy Consumption kWh/1000 h	19 kWh
EPREL Registration Number	1407661
CE mark	Yes
EU RoHS compliant	Yes
Ambient temperature range	-20 °C to 45 °C

## Product Data

Order product name	MAS LEDtube HF 900mm HO 18.5W 840 T5
Full product name	MAS LEDtube HF 900mm HO 18.5W 840 T5
Full product code	872016916315700
Order code	929003596602
Material Nr. (12NC)	929003596602
Numerator - Quantity Per Pack	1
EAN/UPC - Product/Case	8720169163157
Numerator - Packs per outer box	10
EAN/UPC - Case	8720169163164

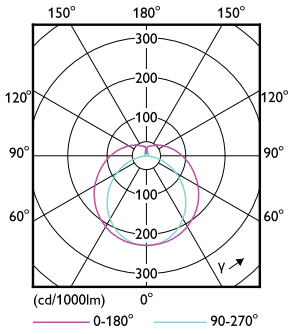
## Dimensional drawing



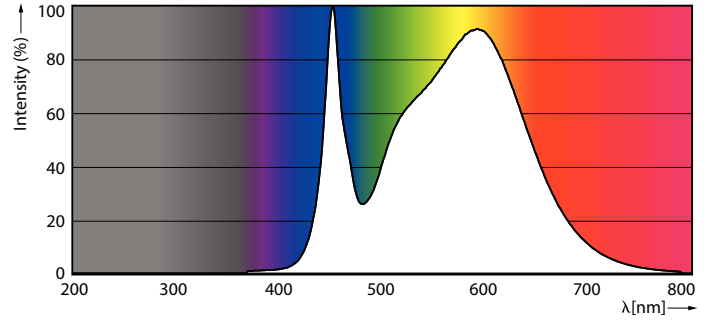
Product	D1	D2	A1	A2	A3
MAS LEDtube HF 900mm HO 18.5W 840 T5	15.5 mm	16/19 mm	849 mm	856 mm	863 mm

# MASTER LED tube InstantFit HF T5

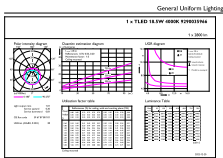
## Photometric data



Light Distribution Diagram - MAS LEDtube HF 900mm HO 18.5W 840 T5

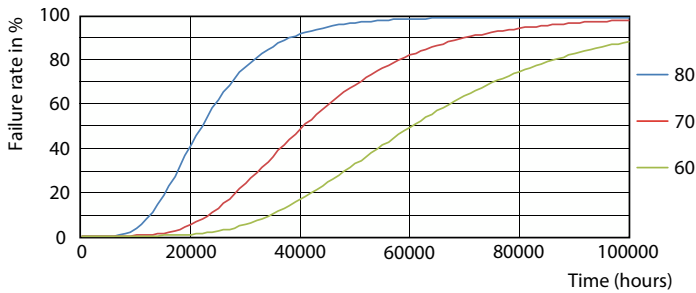


Spectral Power Distribution Colour - MAS LEDtube HF 900mm HO 18.5W 840 T5

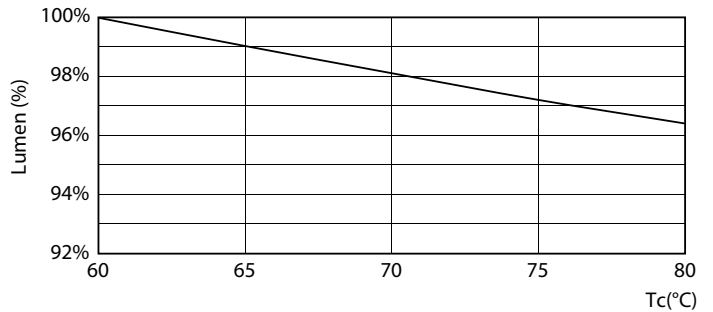


General uniform lighting - MAS LEDtube HF 900mm HO 18.5W 840 T5

## Lifetime



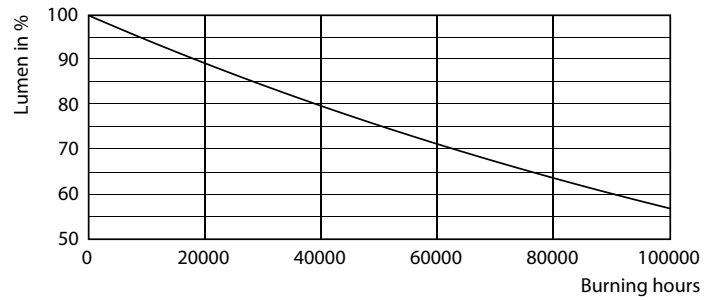
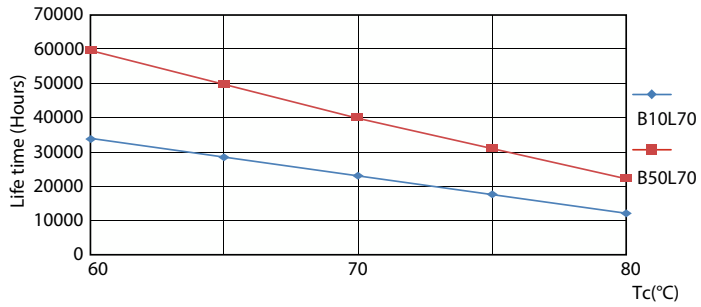
FailureRate



Lumen Maintenance Diagram - MAS LEDtube HF 900mm HO 18.5W 840 T5

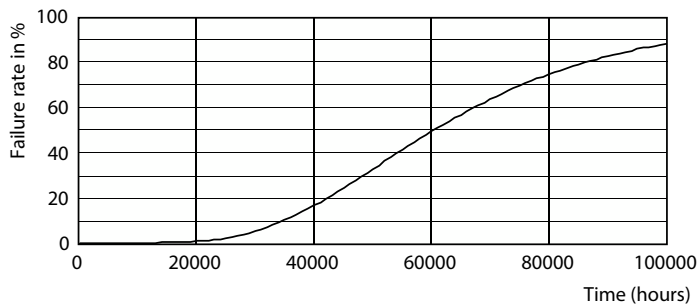
# MASTER LED tube InstantFit HF T5

## Lifetime



LifetimeVsTc

Lumen Maintenance Diagram - MAS LEDtube HF 900mm HO 18.5W 840 T5



Life Expectancy Diagram

