



MASTER LED tube Mains T5



MAS LEDtube 600mm HE 7W 840 T5 EU

LED, T5, Mains, 600 mm, 7 W, 14W TL5 HE, 4000 K, 1050 lm, CRI 80, 50000 hour(s)

The new Philips Master LEDtube Mains T5 brings simplicity to your lighting project. You don't need to pay attention to the driver technology anymore. Thanks to a unique design, Philips MASTER LEDtube Mains T5 installs in luminaires operating on mains power connection. So simple to operate! . Perfectly safe, reliable & easy to install Philips MASTER LEDtube Mains T5 is the ideal alternative to standard fluorescent tubes to maximize value over lifetime with high energy saving and lower maintenance costs.

Product data

General Information		Luminous Efficacy (rated) (Nom)	
Cap-Base	G5		150 lm/W
Nominal lifetime	50,000 hour(s)	Color Consistency	<6
Switching Cycle	200,000	Color rendering index (CRI)	80
Lighting Technology	LED	LLMF At End Of Nominal Lifetime (Nom)	70 %
Flux measurement reference	Sphere	Photobiological safety according to EN 62471	RG0
Warranty period	5 years		
Light Technical		Operating and Electrical	
Color Code	840 [CCT of 4000K]	Input Frequency	50 to 60 Hz
Beam Angle (Nom)	200 degree(s)	Power Consumption	7 W
Luminous Flux	1,050 lm	Lamp Current (Nom)	32 mA
Color Designation	Cool White (CW)	Starting Time (Nom)	0.5 s
Correlated Color Temperature (Nom)	4000 K	Warm-up time to 60% light	0.5 s
		Power Factor (Fraction)	0.9
		Voltage (Nom)	220-240 V

MASTER LED tube Mains T5

LED alternative to fluorescent lamp power	14W TL5 HE
Inrush current at mains	4.5
Max. lamp no. on MCB B type 10A – Mains	160
Max. lamp no. on MCB B type 10A – EM ballast without Compensation Capacitor.	-
Max. lamp no. on MCB B type 10A – EM ballast with Compensation Capacitor.	-
Max. lamp no. on MCB B type 16A – Mains	254
Max. lamp no. on MCB B type 16A – EM ballast without Compensation Capacitor.	-
Max. lamp no. on MCB B type 16A – EM ballast with Compensation Capacitor.	-
Ballast Compatibility	Mains

Temperature

T-Case Maximum (Nom)	50 °C
----------------------	-------

Controls and Dimming

Dimmable	No
----------	----

Mechanical and Housing

Bulb Finish	Frosted
Bulb Material	Glass
Product Length	600 mm
Bulb Shape	T5
Net Weight (Piece)	0.070 kg

Approval and Application

Energy Efficiency Class	D
-------------------------	---

Energy Saving Product	Yes
Approval Marks	RoHS compliance KEMA Keur certificate
Energy Consumption kWh/1000 h	7 kWh
EPREL Registration Number	1840374
CE mark	Yes
EU RoHS compliant	Yes
Flickering value (PstLM) – Flickering value as per EN 61000-3-3	1
Stroboscopic effect visibility measure (SVM)	0.4
Ambient temperature range	-20 to +45 °C

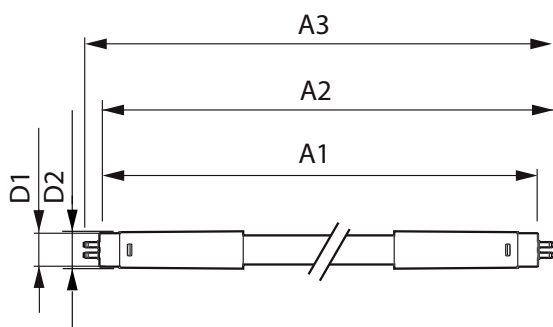
Application Conditions

can it be used in closed luminaires	Yes
-------------------------------------	-----

Product Data

Order product name	MAS LEDtube 600mm HE 7W 840 T5 EU
Full product name	MAS LEDtube 600mm HE 7W 840 T5 EU
Full product code	872016930682000
Order code	929003795502
Material Nr. (12NC)	929003795502
Numerator - Quantity Per Pack	1
EAN/UPC - Product/Case	8720169306820
Numerator - Packs per outer box	10
EAN/UPC - Case	8720169306837

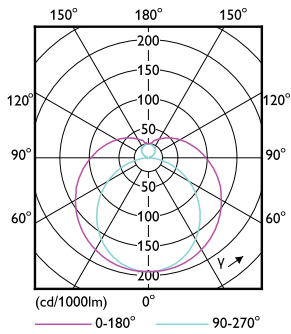
Dimensional drawing



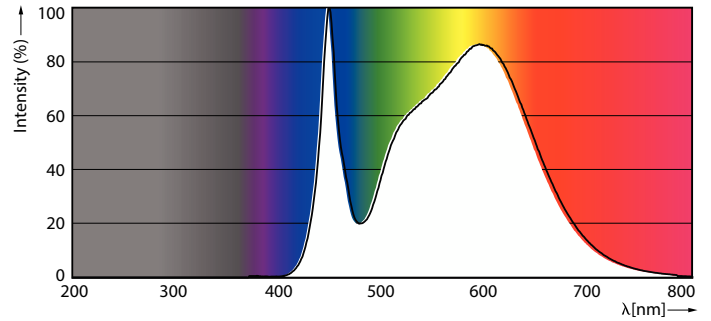
Product	D1	D2	A1	A2	A3
MAS LEDtube 600mm HE 7W 840 T5 EU	15.7 mm	19 mm	549 mm	556.1 mm	563.2 mm

MASTER LED tube Mains T5

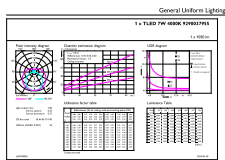
Photometric data



Light Distribution Diagram - MAS LEDtube 600mm HE 7W 840 T5 EU



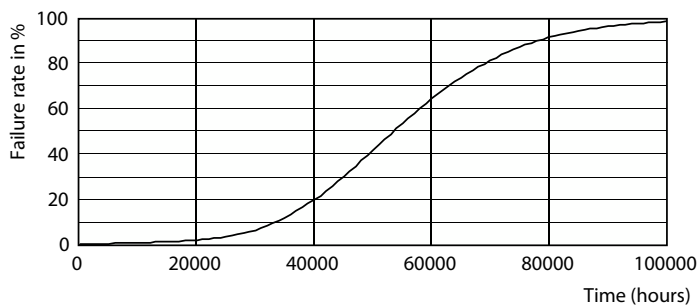
Spectral Power Distribution Colour - MAS LEDtube 600mm HE 7W 840 T5 EU



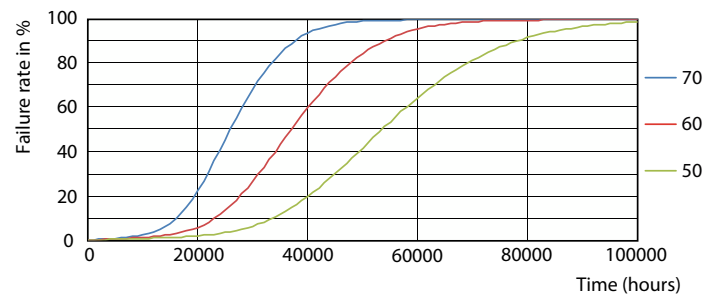
General Uniform Lighting
1 + 180°
1 + 270°

General uniform lighting - MAS LEDtube 600mm HE 7W 840 T5 EU

Lifetime



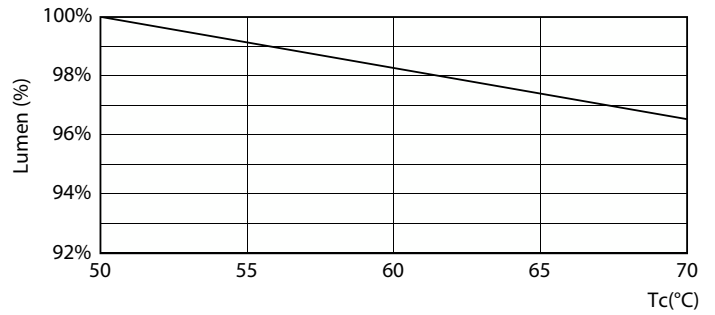
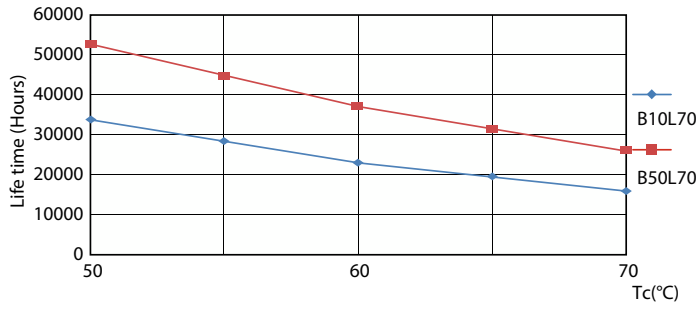
Life Expectancy Diagram



FailureRate

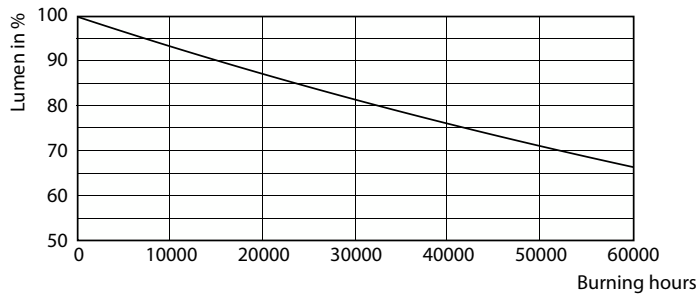
MASTER LED tube Mains T5

Lifetime



LifetimeVsTc

Lumen Maintenance Diagram - MAS LEDtube 600mm HE 7W 840 T5 EU



Lumen Maintenance Diagram - MAS LEDtube 600mm HE 7W 840 T5 EU

