



# MASTER LEDtube Mains T5



## MAS LEDtube 900mm HO 18.5W 840 T5

The new Philips Master LEDtube Mains T5 brings simplicity to your lighting project. You don't need to pay attention to the driver technology anymore. Thanks to a unique design, Philips MASTER LEDtube Mains T5 installs in luminaires operating on mains power connection. So simple to operate! . Perfectly safe, reliable & easy to install Philips MASTER LEDtube Mains T5 is the ideal alternative to standard fluorescent tubes to maximize value over lifetime with high energy saving and lower maintenance costs.

### Product data

General Information		Photobiological safety according to EN 62471	
Cap-Base	G5		RGO
Nominal lifetime	50,000 hour(s)	<b>Operating and Electrical</b>	
Switching Cycle	200,000	Input Frequency	50 to 60 Hz
Lighting Technology	LED	Power Consumption	18.5 W
Flux measurement reference	Sphere	Lamp Current (Max)	93 mA
<b>Light Technical</b>		Lamp Current (Min)	93 mA
Color Code	840 [CCT of 4000K]	Lamp Current (Nom)	93 mA
Beam Angle (Nom)	200 degree(s)	Starting Time (Nom)	0.5 s
Luminous Flux	2,800 lm	Warm-up time to 60% light	0.5 s
Color Designation	Cool White (CW)	Power Factor (Fraction)	0.92
Correlated Color Temperature (Nom)	4000 K	Voltage (Nom)	220-240 V
Luminous Efficacy (rated) (Nom)	151 lm/W	LED alternative to fluorescent lamp power	39 W
Color Consistency	<6	Inrush current at mains	17
Color rendering index (CRI)	80	Max. lamp no. on MCB B type 10A - Mains	41
LLMF At End Of Nominal Lifetime (Nom)	70 %	Max. lamp no. on MCB B type 10A – EM ballast without Compensation Capacitor.	-

# MASTER LEDtube Mains T5

Max. lamp no. on MCB B type 10A – EM ballast with Compensation Capacitor.	-
Max. lamp no. on MCB B type 16A – Mains	66
Max. lamp no. on MCB B type 16A – EM ballast without Compensation Capacitor.	-
Max. lamp no. on MCB B type 16A – EM ballast with Compensation Capacitor.	-
Ballast Compatibility	Mains

## Temperature

T-Case Maximum (Nom)	60 °C
----------------------	-------

## Controls and Dimming

Dimmable	No
----------	----

## Mechanical and Housing

Bulb Finish	Frosted
Bulb Material	Glass
Product Length	900 mm
Bulb Shape	T5
Net Weight (Piece)	0.125 kg

## Approval and Application

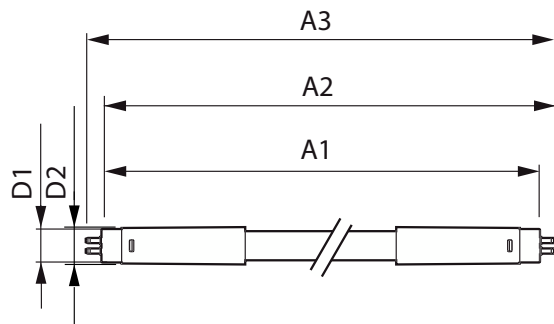
Energy Efficiency Class	D
Energy Saving Product	Yes

Approval Marks	RoHS compliance
Energy Consumption kWh/1000 h	19 kWh
EPREL Registration Number	1590869
CE mark	Yes
EU RoHS compliant	Yes
Flickering value (PstLM) – Flickering value as per EN 61000-3-3	1
Stroboscopic effect visibility measure (SVM)	0.4
Ambient temperature range	-20 to +45 °C

## Product Data

Order product name	MAS LEDtube 900mm HO 18.5W 840 T5
Full product name	MAS LEDtube 900mm HO 18.5W 840 T5
Full product code	872016927527000
Order code	929003734702
Material Nr. (12NC)	929003734702
Numerator - Quantity Per Pack	1
EAN/UPC - Product/Case	8720169275270
Numerator - Packs per outer box	10
EAN/UPC - Case	8720169275287

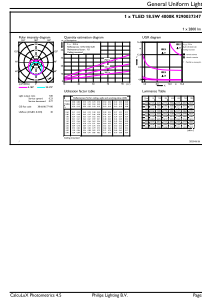
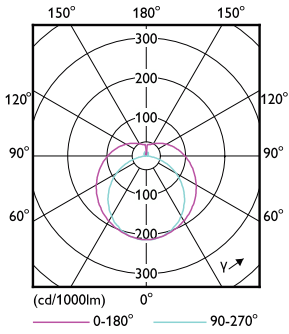
## Dimensional drawing



Product	D1	D2	A1	A2	A3
MAS LEDtube 900mm HO 18.5W 840 T5	19 mm	849 mm	856.1 mm	863.2 mm	

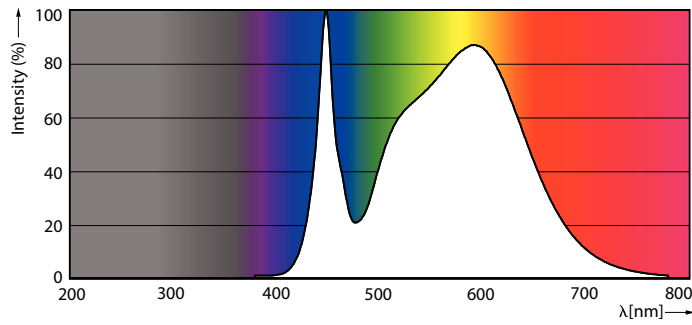
# MASTER LEDtube Mains T5

## Photometric data



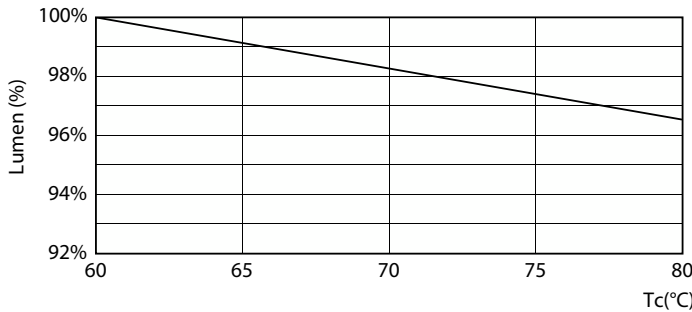
Light Distribution Diagram - MAS LEDtube 900mm HO 18.5W 840 T5

General uniform lighting - MAS LEDtube 900mm HO 18.5W 840 T5

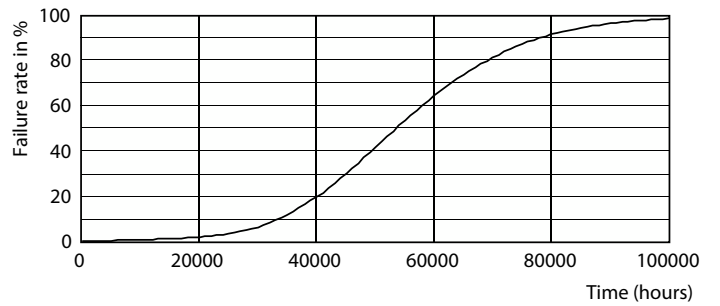


Spectral Power Distribution Colour - MAS LEDtube 900mm HO 18.5W 840 T5

## Lifetime



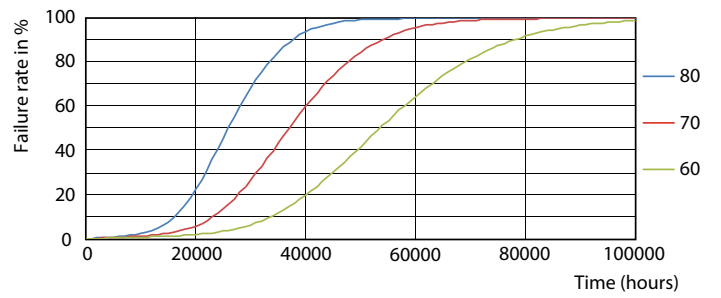
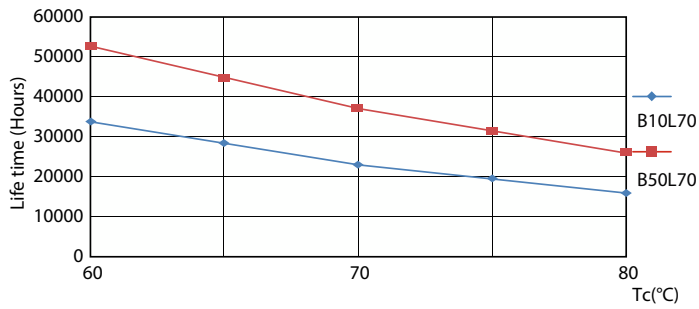
Lumen Maintenance Diagram - MAS LEDtube 900mm HO 18.5W 840 T5



Life Expectancy Diagram

# MASTER LEDtube Mains T5

## Lifetime



LifetimeVsTc

FailureRate



Lumen Maintenance Diagram - MAS LEDtube 900mm HO 18.5W 840 T5

