



MASTER LEDtube InstantFit HF T5



MAS LEDtube HF 1200mm HO 26W 830 T5 OE

The Philips MASTER LEDtube integrates a LED light source into a traditional fluorescent form factor. Its unique design creates a perfectly uniform visual appearance, which cannot be distinguished from traditional fluorescent. These T5 lighting tubes are the right choice for absolute performance and are designed to stand up to everyday conditions. Unparalleled savings thanks to low energy consumption and an exceptionally long lifetime make these T5 LED tubes the choice for every demanding application.

Product data

General Information		LLMF At End Of Nominal Lifetime (Nom)		70 %
Cap-Base	G5 [G5]	Photobiological safety according to EN 62471 RGO		
Nominal lifetime	60,000 hour(s)	Operating and Electrical		
Switching Cycle	50,000	Line Frequency	30K to 60K Hz	
Lighting Technology	LED	Input Frequency	30K to 60K Hz	
Flux measurement reference	Sphere	Power Consumption	26 W	
CE mark	Yes	Starting Time (Nom)	0.5 s	
EU RoHS compliant	Yes	Warm-up time to 60% light	0.5 s	
Light Technical		Power Factor (Fraction)	0.9	
Color Code	830 [CCT of 3000K]	Voltage (Nom)	20-90 V	
Beam Angle (Nom)	200 degree(s)	LED alternative to fluorescent lamp power	54 W	
Luminous Flux	3,700 lumen	Temperature		
Color Designation	White (WH)	Ambient temperature range	-20 °C to 45 °C	
Correlated Color Temperature (Nom)	3000 K	T-Case Maximum (Nom)	55 °C	
Luminous Efficacy (rated) (Nom)	142.00 lm/W			
Color Consistency	<6			
Color rendering index (CRI)	80			

MASTER LEDtube InstantFit HF T5

Controls and Dimming

Dimmable	Yes - Check ballast compatibility
----------	-----------------------------------

Mechanical and Housing

Bulb Finish	Frosted
Bulb Material	Glass
Product Length	1,200 mm
Bulb Shape	Tube, double-ended

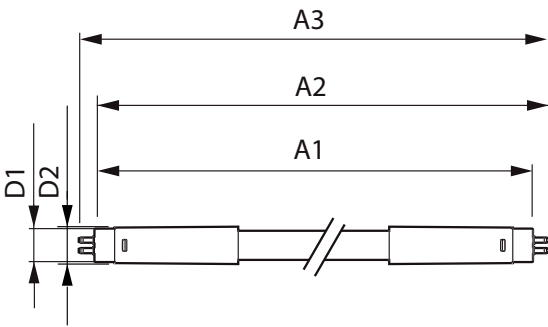
Approval and Application

Energy Efficiency Class	E
Energy Saving Product	Yes
Approval Marks	RoHS compliance TUV CE marking KEMA Keur certificate
Energy Consumption kWh/1000 h	26 kWh
EPREL Registration Number	1384140

Product Data

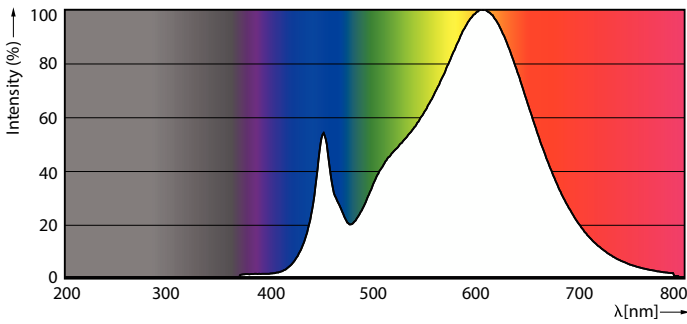
Full product code	871869974951400
Order product name	MAS LEDtube HF 1200mm HO 26W 830 T5 OE
Order code	929002352002
Numerator - Quantity Per Pack	1
Numerator - Packs per outer box	10
Material Nr. (12NC)	929002352002
Full product name	MAS LEDtube HF 1200mm HO 26W 830 T5 OE
EAN/UPC - Case	8718699749521
EAN/UPC - Product/Case	8718699749514

Dimensional drawing

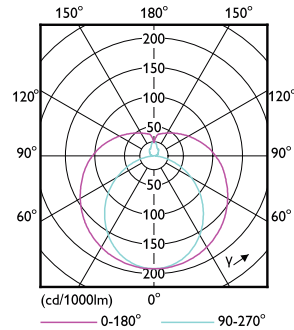


Product	D1	D2	A1	A2	A3
MAS LEDtube HF 1200mm HO 26W 830 T5 OE	15.5 mm	19 mm	1,149 mm	1,156 mm	1,163 mm

Photometric data



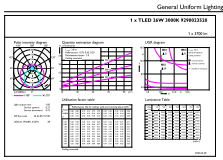
Spectral Power Distribution Colour - MAS LEDtube HF 1200mm HO 26W 830 T5 OE



Light Distribution Diagram - MAS LEDtube HF 1200mm HO 26W 830 T5 OE

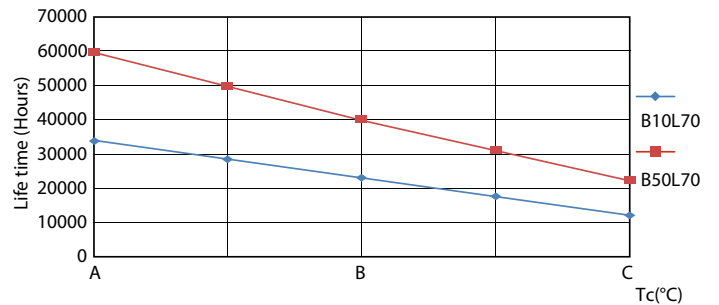
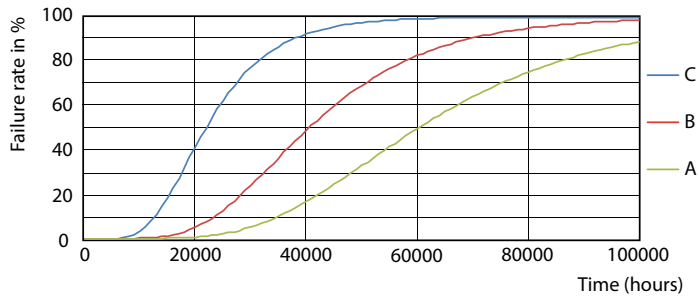
MASTER LEDtube InstantFit HF T5

Photometric data



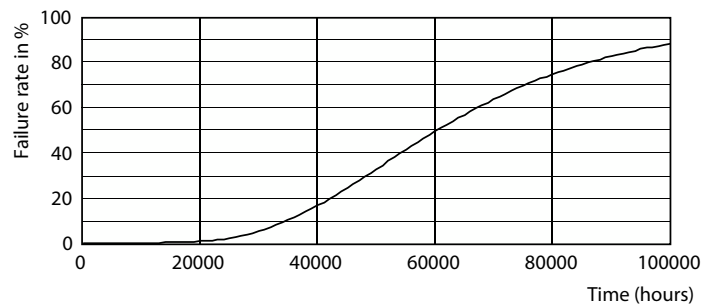
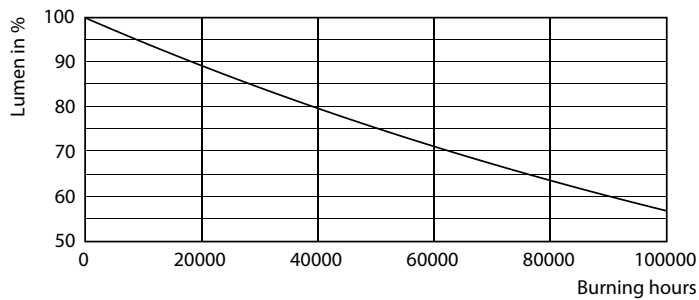
General uniform lighting - MAS LEDtube HF 1200mm HO 26W 830 T5 OE

Lifetime



Life Expectancy Diagram - MAS LEDtube HF 1200mm HO 26W 830 T5 OE

Life Expectancy Diagram - MAS LEDtube HF 1200mm HO 26W 830 T5 OE

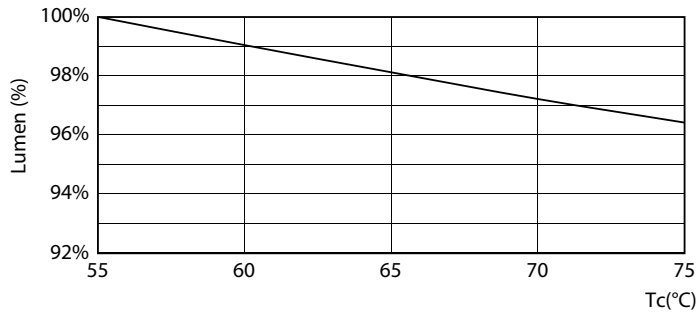


Lumen Maintenance Diagram - MAS LEDtube HF 1200mm HO 26W 830 T5 OE

Life Expectancy Diagram - MAS LEDtube HF 1200mm HO 26W 830 T5 OE

MASTER LEDtube InstantFit HF T5

Lifetime



Lumen Maintenance Diagram - MAS LEDtube HF 1200mm HO 26W 830 T5
OE

