

MASTER LEDtube InstantFit HF



MASTER LEDtube HF 1500mm HO 20W830 T8

The Philips MASTER LEDtube integrates a LED light source into a traditional fluorescent form factor. Its unique design creates a perfectly uniform visual appearance which cannot be distinguished from traditional fluorescent. This product is the ideal solution for up lighting in general lighting applications.

Warnings and Safety

- NOTES: The overall energy efficiency and light distribution of any installation that uses these lamps are determined by the design of the installation.

Product data

General Information	
Cap base	G13 ROT
Nominal lifetime	75,000 h
Switching Cycle	50,000
Lighting Technology	LED
Flux measurement reference	Sphere

Light Technical	
Colour Code	830 [CCT of 3000K]
Beam angle (nom.)	160 degree(s)
Luminous Flux	2,900 lm
Luminous efficacy (rated) (nom.)	145 lm/W
Colour designation	White (WH)
Correlated Colour Temperature	3000 K
Colour consistency	<6
Colour rendering index (CRI)	80
LLMF at end of nominal lifetime (nom.)	70 %

Flickering value (PstLM)	0.5
Stroboscopic effect	0.2
Photobiological safety according to EN 62471	RG0

Operating and Electrical	
Line Frequency	20000-75000 Hz
Input frequency	20000-75000 Hz
Power Consumption	20 W
Lamp current (max.)	750 mA
Lamp current (min.)	300 mA
Starting time (nom.)	0.5 s
Warm-up time to 60% light	0.5 s
Power Factor (Fraction)	0.9
Voltage (nom.)	30-80 V
LED alternative to fluorescent lamp power	58 W
Inrush current at mains	-
Max. lamp no. on MCB B type 10A — Mains	-

MASTER LEDtube InstantFit HF

Max. lamp no. on MCB B type 10A – EM ballast without Compensation Capacitor.	-
Max. lamp no. on MCB B type 10A – EM ballast with Compensation Capacitor.	-
Max. lamp no. on MCB B type 16A – Mains	-
Max. lamp no. on MCB B type 16A – EM ballast without Compensation Capacitor.	-
Max. lamp no. on MCB B type 16A – EM ballast with Compensation Capacitor.	-
Ballast Compatibility	HF

Temperature

Ambient temperature range	-20°C to 45°C
T-Case maximum (nom.)	55 °C

Controls and Dimming

Dimmable	Yes – Check ballast compatibility
----------	-----------------------------------

Mechanical and Housing

Lamp Finish	Frosted
Bulb material	Plastic
Product length	1,500 mm
Bulb shape	T8

Approval and Application

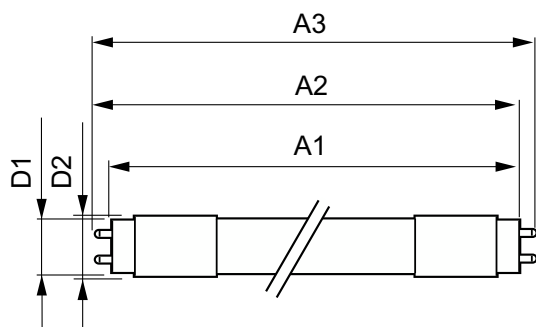
Energy Efficiency Class	E
-------------------------	---

Energy-saving product	Yes
Approval marks	RoHS compliance CE marking KEMA Keur certificate ENEC certificate
Energy consumption kWh/1,000 hours	20 kWh
EPREL registration number	1165503
CE mark	Yes
EU RoHS compliant	Yes

Product Data

Order product name	MAS LEDtube HF 1500mm HO 20W830 T8
Full product name	MASTER LEDtube HF 1500mm HO 20W830 T8
Full EOC	871951446694400
Order code	46694400
Material no. (12 NC)	929003553702
Numerator – quantity per pack	1
Net Weight (Piece)	0.280 kg
EAN/UPC – Product/Case	8719514466944
Numerator – packs per outer box	20
EAN/UPC - Case	8719514466951

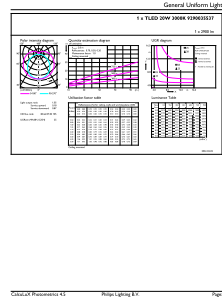
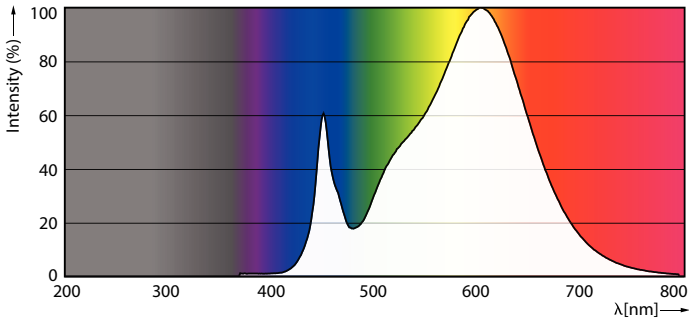
Dimensional drawing



Product	D1	D2	A1	A2	A3
MAS LEDtube HF 1500mm HO 20W830 T8	25.8 mm	28 mm	1,498.8 mm	1,505.9 mm	1,513 mm

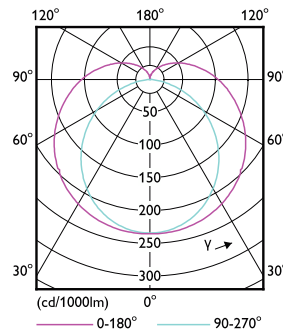
MASTER LEDtube InstantFit HF

Photometric data



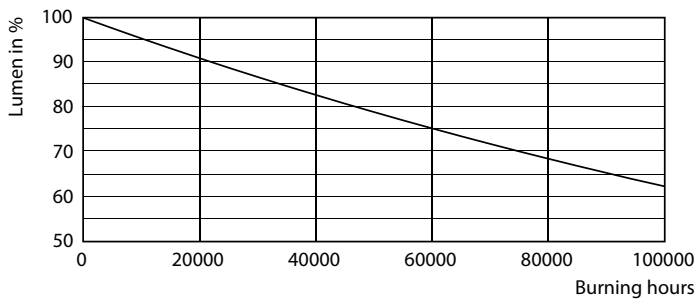
Spectral Power Distribution Colour - MAS LEDtube HF 1500mm HO 20W830 T8

General uniform lighting - MAS LEDtube HF 1500mm HO 20W830 T8

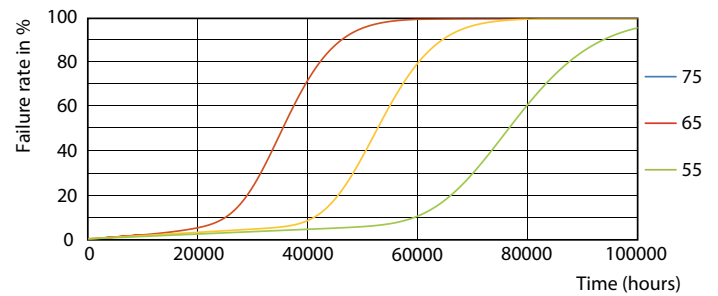


Light Distribution Diagram - MAS LEDtube HF 1500mm HO 20W830 T8

Lifetime



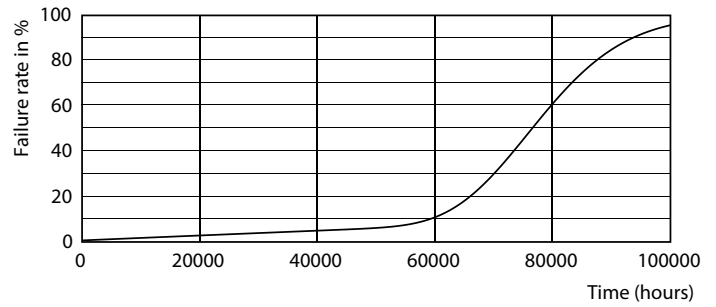
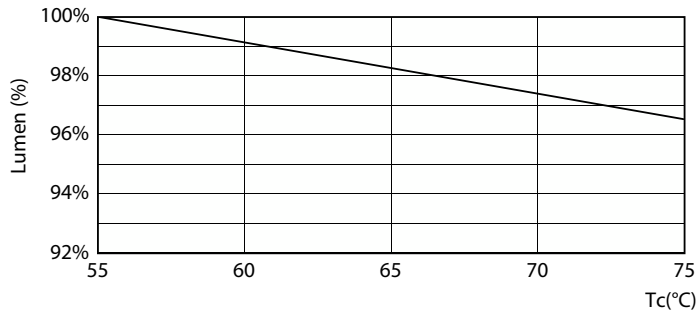
Lumen Maintenance Diagram - MAS LEDtube HF 1500mm HO 20W830 T8



FailureRate

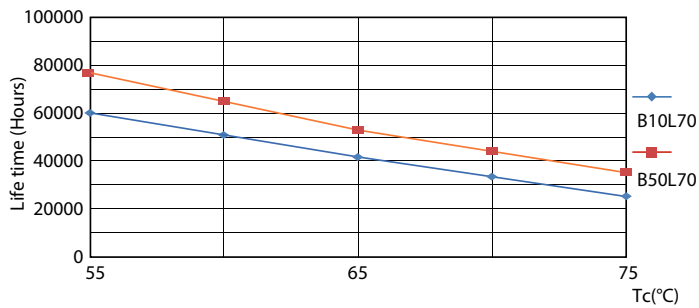
MASTER LEDtube InstantFit HF

Lifetime



Lumen Maintenance Diagram - MAS LEDtube HF 1500mm HO 20W830 T8

Life Expectancy Diagram



LifetimeVsTc

