

CorePro LED tube Universal T8



CorePro LEDtube UN 1200mm HO 18W840 T8

The new Philips CorePro LEDtube Universal T8 brings simplicity to your lighting project. You don't need to pay attention to the driver technology anymore. Thanks to a unique design, Philips CorePro LEDtube Universal T8 directly fits in luminaires operating either on Electro Magnetic ballasts or HF Electronic ballasts or mains power connection. So simple to operate and no need to carry double stock of products! Perfectly safe, reliable & easy to install Philips CorePro LEDtube Universal T8 is the ideal alternative to standard fluorescent tubes to save energy and lower investment.

Product data

General Information		Photobiological safety according to EN 62471	
Cap-Base	G13	RG0	
Nominal lifetime	50,000 hour(s)	Operating and Electrical	
Switching Cycle	50,000	Line Frequency	50 to 60 Hz
Lighting Technology	LED	Input Frequency	50 to 60 Hz
Flux measurement reference	Sphere	Power Consumption	18 W
Light Technical		Lamp Current (Nom)	100 mA
Color Code	840 [CCT of 4000K]	Starting Time (Nom)	0.5 s
Beam Angle (Nom)	240 degree(s)	Warm-up time to 60% light	0.5 s
Luminous Flux	2,000 lm	Power Factor (Fraction)	0.9
Color Designation	Cool White (CW)	Voltage (Nom)	220-240 V
Correlated Color Temperature (Nom)	4000 K	Ballast Compatibility	Universal
Luminous Efficacy (rated) (Nom)	111 lm/W	LED alternative to fluorescent lamp power	36 W
Color Consistency	<6	Inrush current at mains	9.4
Color rendering index (CRI)	80	Max. lamp no. on MCB B type 10A - Mains	82
LLMF At End Of Nominal Lifetime (Nom)	70 %	Max. lamp no. on MCB B type 10A – EM ballast without Compensation Capacitor.	104

CorePro LED tube Universal T8

Max. lamp no. on MCB B type 10A – EM ballast with Compensation Capacitor.	19
Max. lamp no. on MCB B type 16A – Mains	131
Max. lamp no. on MCB B type 16A – EM ballast without Compensation Capacitor.	166
Max. lamp no. on MCB B type 16A – EM ballast with Compensation Capacitor.	30

Temperature

T-Case Maximum (Nom)	55 °C
----------------------	-------

Controls and Dimming

Dimmable	No
----------	----

Mechanical and Housing

Bulb Finish	Frosted
Bulb Material	Glass
Product Length	1,200 mm
Bulb Shape	T8
Net Weight (Piece)	0.215 kg

Approval and Application

Energy Efficiency Class	E
Energy Saving Product	Yes
Approval Marks	RoHS compliance CE marking KEMA Keur certificate

Energy Consumption kWh/1000 h	18 kWh
EPREL Registration Number	1932578
CE mark	Yes
EU RoHS compliant	Yes
Flickering value (PstLM) - Flickering value as per EN 61000-3-3	1
Stroboscopic effect visibility measure (SVM)	0.4
Ambient temperature range	-20 to +45 °C

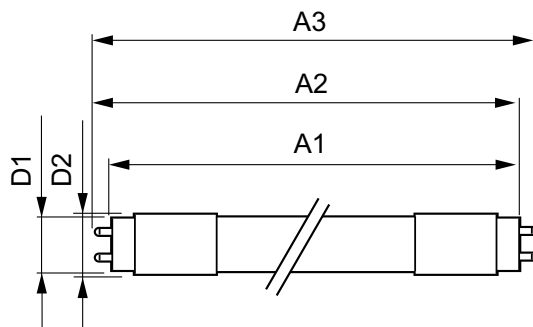
Application Conditions

can it be used in closed luminaires	Yes
-------------------------------------	-----

Product Data

Order product name	CorePro LEDtube UN 1200mm HO 18W840 T8
Full product name	CorePro LEDtube UN 1200mm HO 18W840 T8
Full product code	871869680168000
Order code	929001869302
Material Nr. (12NC)	929001869302
Numerator - Quantity Per Pack	1
EAN/UPC - Product/Case	8718696801680
Numerator - Packs per outer box	10
EAN/UPC - Case	8718696801697

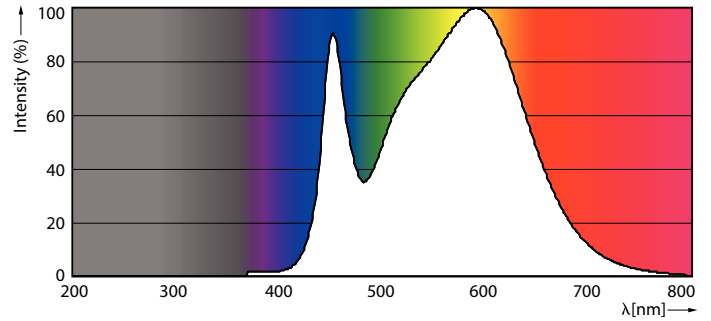
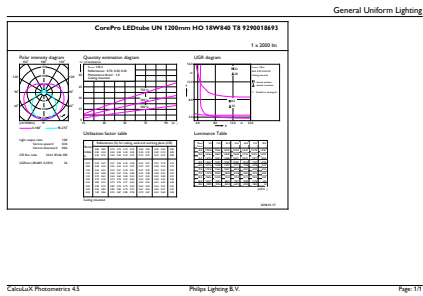
Dimensional drawing



Product	D1	D2	A1	A2	A3
CorePro LEDtube UN 1200mm HO 18W840 T8	27.9 mm	28 mm	1,199.4 mm	1,205.3 mm	1,213.6 mm

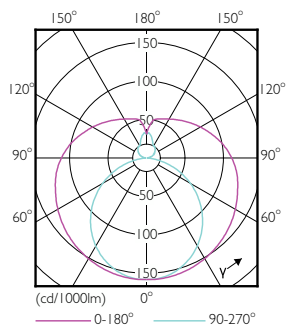
CorePro LED tube Universal T8

Photometric data



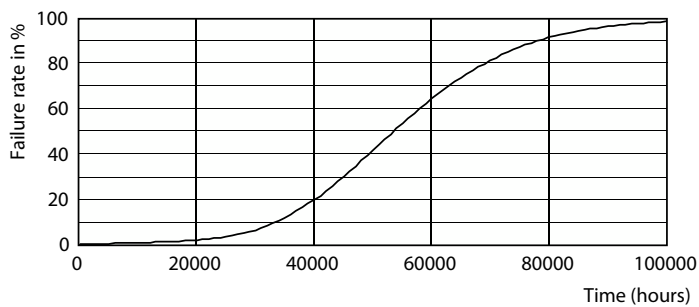
General uniform lighting - CorePro LEDtube UN 1200mm HO 18W840 T8

Spectral Power Distribution Colour - CorePro LEDtube UN 1200mm HO 18W840 T8

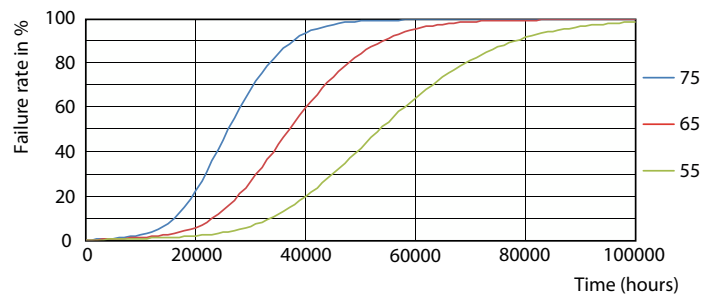


Light Distribution Diagram - CorePro LEDtube UN 1200mm HO 18W840 T8

Lifetime



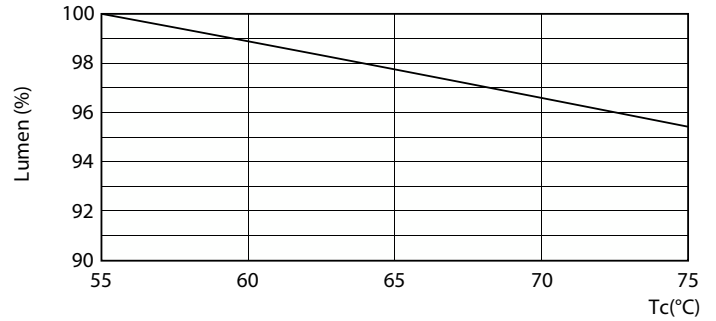
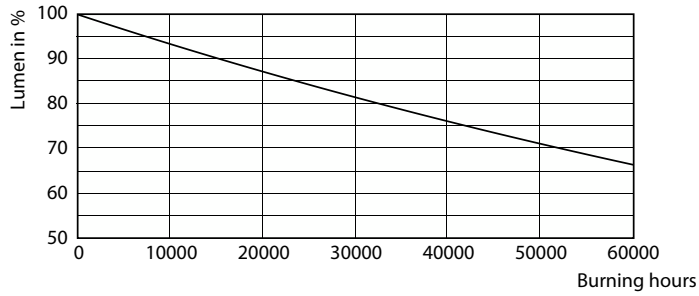
Life Expectancy Diagram



FailureRate

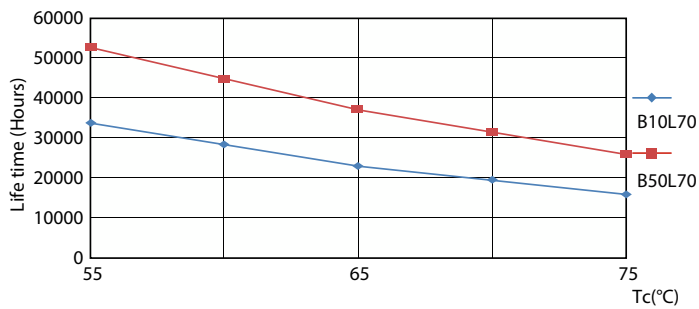
CorePro LED tube Universal T8

Lifetime



Lumen Maintenance Diagram - CorePro LEDtube UN 1200mm HO 18W840 T8

Lumen Maintenance Diagram - CorePro LEDtube UN 1200mm HO 18W840 T8



LifetimeVsTc

