

PRODUCT DATASHEET

LN COMP SWITCH 300 4 W 4000 K

LINEAR COMPACT SWITCH | Compact single or light line luminaire with switch



AREAS OF APPLICATION

- Direct replacement for luminaires with fluorescent lamps
- Indoor applications
- Corridors, entrance areas, stairwells, living rooms, basements
- Accent lighting
- Public areas
- Cove lighting
- Shelves, furniture integration or under cabinet mounting
- Seamless linear lighting

PRODUCT BENEFITS

- Compact dimensions
- Little space required thanks to compact dimensions
- Seamless connection of up to 10 luminaires in a line
- Handy switch directly installed on the luminaire
- Low flicker light thanks to special electronic control gear
- Flexible installation in 2 different angles with 2 different mounting options
- Flexible application due to a wide range of available lengths of 300 to 1200 mm.
- Angled connection possible with included cable

PRODUCT FEATURES

- Built-in switch
- Up to 10 luminaires connectable
- Translucent end caps
- Versions with luminous flux 400...1500 lm available



- 4 different lengths available
- High luminous efficacy: up to 110 lm/W
- Glow Wire Test according to IEC 60695-2-12: 850 °C

TECHNICAL DATA

Electrical data

Nominal wattage	4.00 W
Operating mode	Integrated LED driver
Nominal voltage	220...240 V
Power factor λ	>0.5
Mains frequency	50/60 Hz
Max. no. of lum. on circuit break. B16 A	40
Max. no. of lum. on circuit break. C10 A	32
Max. no. of lum. on circuit break. C16 A	51
Inrush current	15.0 A
Total harmonic distortion	88 %
Inrush current time T_{h50}	150 μ s

Luminaire control gear data

Low flicker	Yes
Output current	50 mA

Photometrical data

Color temperature	4000 K
Luminous flux	450 lm
Luminous efficacy	110 lm/W
Standard deviation of color matching	<5 sdc _m
Light color (designation)	Cool White
Color rendering index Ra	>80

Light technical data

Beam angle	140 °
------------	-------

Dimensions & weight



Length	313.0 mm
Width	28.0 mm
Height	36.0 mm
Product weight	119.00 g

Colors & materials

Body material	Polycarbonate (PC)
Product color	White
Housing color	White
Cover material	Polycarbonate (PC)
Light emitting surface material	Polycarbonate

Temperatures & operating conditions

Ambient temperature range	-20...+40 °C
----------------------------------	--------------

Lifespan

Number of switching cycles	100000
Lifespan L70/B50 at 25 °C	50000 h
Lifespan L80/B10 at 25 °C	40000 h
Lifespan L90/B10 at 25 °C	30000 h

Additional product data

Mounting type	Surface
Mounting location	Ceiling / Wall
Low flicker	Yes

Capabilities

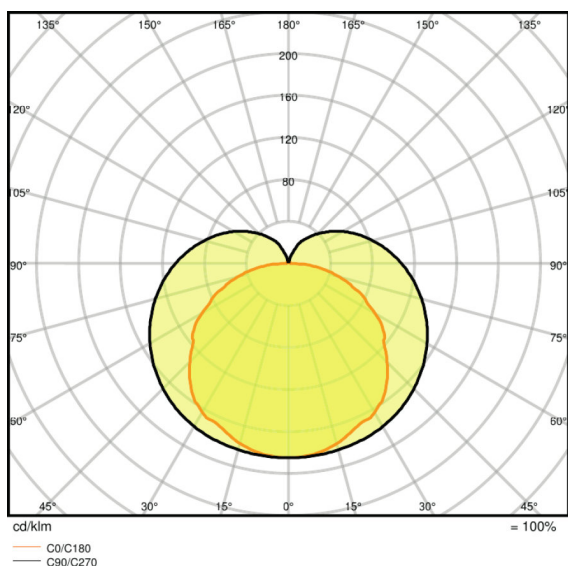
Dimmable	No
Type of connection	Screw terminal, 2-Pole (L,N)

LED module replaceable	Not replaceable
Ball shot safe	No

Certificates & standards

Protection class IK (shock resistance)	IK03
Glow Wire Test according to IEC 60695-2-12	850 °C
Photobiological safety group EN62778	RG 0
Protection class	II
Type of protection	IP20
Standards	CE/CB/TÜV SÜD/EAC/RoHS

Light Distribution



LDC typ polar

EQUIPMENT / ACCESSORIES

- Equipped with power plug, cable connector and line adapter for connecting further luminaires
- Mounting material for wall and ceiling installations included

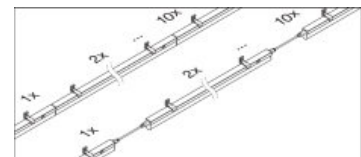
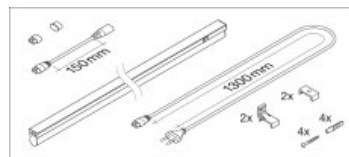
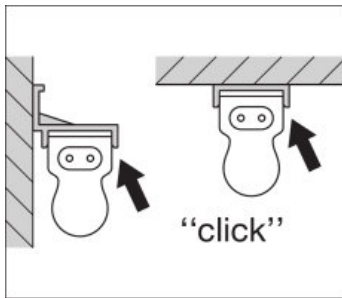
LOGISTICAL DATA

Product code	Packaging unit (Pieces/Unit)	Dimensions (length x width x height)	Gross weight	Volume
4058075106093	Folding carton box 1	42 mm x 29 mm x 580 mm	167.00 g	0.71 dm ³

4058075106109	Shipping carton box 25	558 mm x 223 mm x 180 mm	5954.00 g	22.40 dm ³
---------------	---------------------------	--------------------------	-----------	-----------------------

The mentioned product code describes the smallest quantity unit which can be ordered. One shipping unit can contain one or more single products. When placing an order, for the quantity please enter single or multiples of a shipping unit.

ADDITIONAL CATALOG INFORMATION



REFERENCES / LINKS

For Guarantee see

▶ www.ledvance.com/guarantee

DISCLAIMER

Subject to change without notice. Errors and omission excepted. Always make sure to use the most recent release.