



Philips myGarden  
Wall light

Arbour IR  
anthracite  
LED

myGarden



16461/93/16

## Always light when you come home

Philips Arbour LED outdoor wall light in anthracite grey frames a panel of light within a durable die-cast aluminium surround and has a motion sensor. This picture of light will illuminate your outdoor space with diffuse warm white light.

### Designed for your garden

- Motion sensor, for convenience and reassurance
- IP44 - weather-proof

### Sustainable light solutions

- High quality LED light
- Energy saving
- Warm white light
- Long operating life of up to 25 years
- Philips offers a 5-year warranty on the LED module and driver

**PHILIPS**

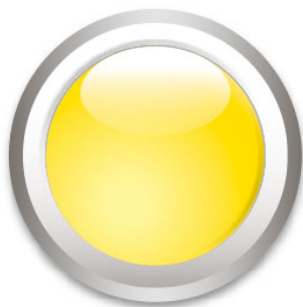
# Highlights

## High quality LED light



The LED technology integrated into this Philips lamp is a unique solution developed by Philips. It turns on instantly, enables an optimal light output and brings out vivid colours in your home.

## Warm white light



Light can have different colour temperatures, indicated in units called Kelvin (K). Lamps with a low Kelvin value produce a warm, more cosy light, while those with a higher Kelvin value produce a cool, more energising light. This Philips lamp offers warm white light for a cosy atmosphere.

## Energy saving



This Philips energy-saving lamp conserves energy compared with traditional light sources,

helping you to save money on your electricity bills and do your bit for the environment.

## IP44 - weather-proof



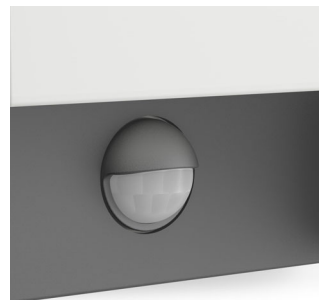
This Philips outdoor light is especially designed for humid outdoor environments. It was tested rigorously to ensure its water resistance. The IP level is described by two figures: the first one refers to the protection level against dust, the second against water. This outdoor light is designed with IP44: it is protected against splashing water. This product is most commonly used and ideal for general outdoor use.

## Long operating life



A light source you can trust. The LED bulb, delivered with this Philips LED lamp, will last up to 25,000 hours (which equals 25 years on the basis of an average use of 3 hours/day with at least of 13,000 on/off switching cycles). It feels so good to think that you won't have to worry about maintenance or light bulb replacement while having the perfect light ambience in your home.

## Motion sensor



A motion sensor is included to welcome you when you return home or let you know when someone's coming.

## 5-year warranty on LED system



On top of the standard 2-year warranty for this lamp, Philips offers a 5-year warranty on the LED system, meaning the LED module and the driver in this lamp.

# Specifications

## Design and finishing

- Material: aluminium
- Colour: anthracite

## Extra feature/accessory incl.

- Motion sensor
- 5 year warranty on the LED module
- Fully weatherproof

## Product dimensions and weight

- Height: 22.1 cm
- Length: 16.6 cm
- Width: 7.5 cm
- Net weight: 0.695 kg

## Technical specifications

- Mains power: Range 220 V–240 V, 50 Hz
- Bulb technology: LED, 230 V
- Number of bulbs: 1
- Wattage bulb included: 6 W
- Light colour: warm white
- Total lumen output fixture: 600 lm

- Fixture dimmable: No
- LED
- Lifetime up to: 25,000 hrs
- IP code: IP44, protection against objects bigger than 1 mm, protection from splashed water
- Class of protection: II - double insulated
- Light source equivalent to traditional bulb of: 47 W

## Service

- Warranty: 5 year(s)

## Packaging dimensions and weight

- Height: 24.1 cm
- Length: 17.6 cm
- Width: 8.6 cm
- Weight: 0.815 kg

## Miscellaneous

- Especially designed for: Garden and Patio
- Style: Contemporary
- Type: Wall light



Issue date 2017-03-20

Version: 1.0.1

12 NC: 9150 051 93901  
EAN: 87 18696 13125 1

© 2017 Philips Lighting Holding B.V.  
All Rights reserved.

Specifications are subject to change without notice.  
Trademarks are the property of Philips Lighting Holding B.V. or their respective owners.

[www.philips.com](http://www.philips.com)